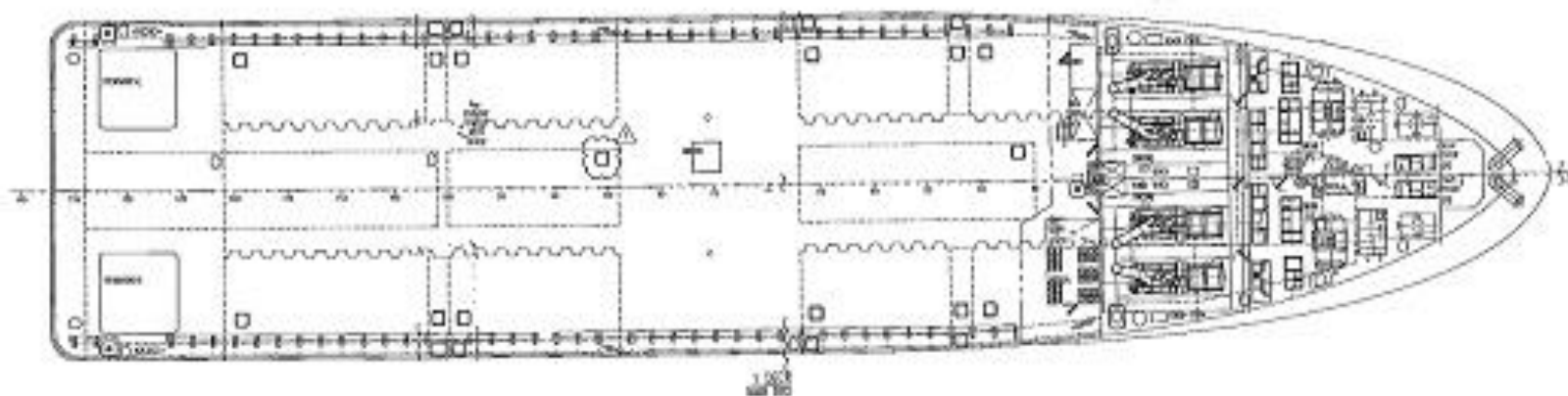
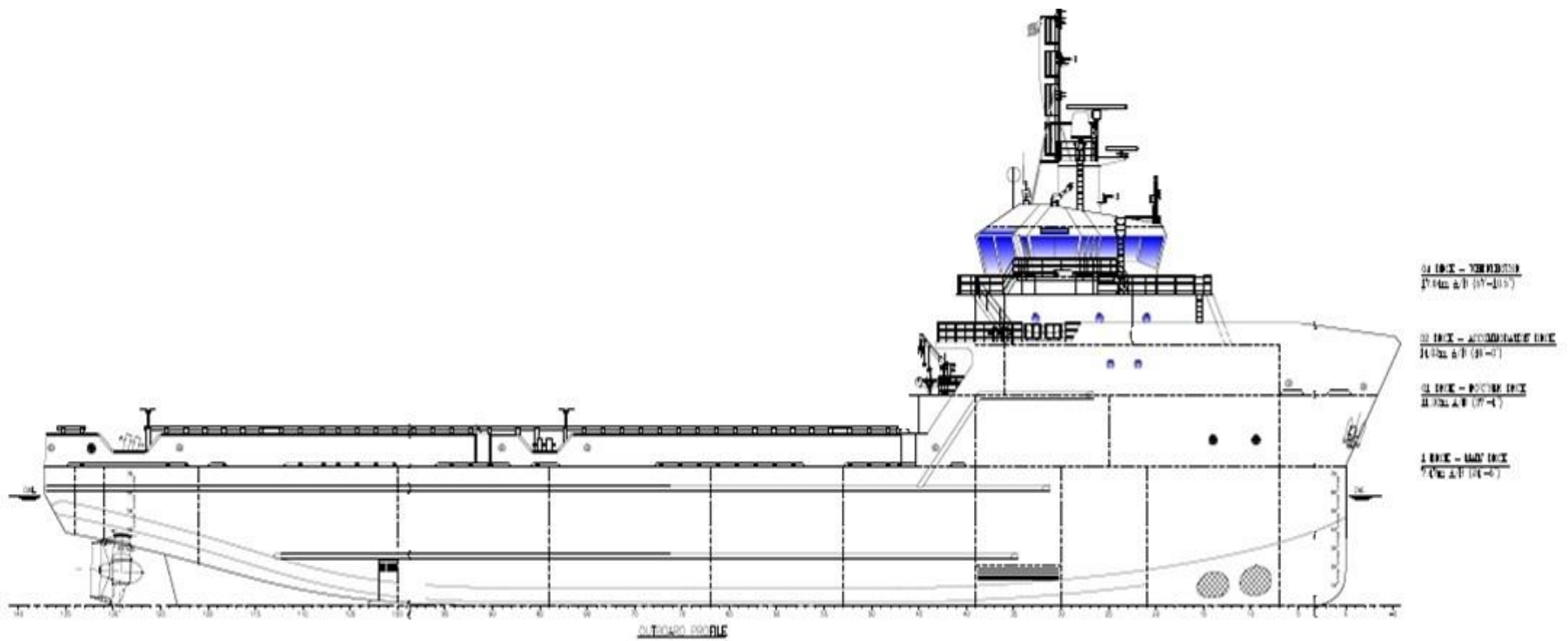


Technical Specification

PSV 4500 STXM SV290

BRAVANTE VI



MAIN DESCRIPTION		MEASUREMENT	
Type:	STXM SV290	Length OAL:	87,17 m
Classification:	RINA ✕A1, FIRE FIGHTING VESSEL CLASS 1, OFFSHORE SUPPORT VESSEL, ✕AMS, ✕ACCU, ✕DPS-2, ENVIRO, GP	Length Bpp:	80,47 m
Yard:	Eastern Shipbuilding Group	Breadth Moulded:	18,30 m
Yard Built No.:	Hull 156	Depth Moulded:	7,47 m
Place Built:	Panama City	Draught Max:	5,90 m
Country Built:	USA	Gross Tonnage:	3.378 GT
Delivered:	2014	Net Tonnage:	1.088 NT
Flag:	Brazilian (REB)	DWT:	4.500 tons
Port of Registry:	Rio de Janeiro	Service Speed:	11.0 knots
Owner:	Boldini Ltda.	Max Speed:	13.0 knots
		ISM:	Brasbunker Part. S/A
CARGO CAPACITY		DISCHARGE RATE	
Deck Cargo:	2700 tons	Loading/Discharge Station:	2 each side
Deck Area:	871 m ²	Fuel Oil Cargo Pump:	160 m ³ /h – 60 head
Deck Strength:	5,0 t/m ²	Portable Water Pump:	90 m ³ /h – 60 head
Segregation 1:		Drill Water Pump:	90 m ³ /h – 60 head
Cargo: Drilling Water/ Drilling Brine/Cargo Fuel Oil :	1.172,70m ³	Dry Bulk Pump:	240 m ³ /h – 60 head
Drill Water	105,40m ³	Liquid Mud Pump:	194 m ³ /h – 60 head
Segregation 2:			
Cargo Fuel Oil/Liquid Mud:	941,8 m ³		
Segregation 3:			
Drill Water/Drilling Brine/Cargo Fuel Oil	667 m ³		
Segregation 4:			
Cargo Fuel Oil	658,9 m ³		
Ships Portable Water Tank Capacity:	100,6 m ³		
Ships Fuel Oil	242,09 m ²		
MACHINERY / PROPULSION/FIRE FIGHTING			
Main Engine Set 1 :	1 x 1825 Kw 1.800 rpm (CUMMINS QSK60 - DM)	Emergency/Harbor Generator:	425 Kw (CUMMINS)
Main Engine Set 2 :	1 x 1825 Kw 1.800 rpm (CUMMINS QSK60 - DM)	Electric Generator:	4 x 1.825 Kw
Main Engine Set 3 :	1 x 1825 Kw 1.800 rpm (CUMMINS QSK60 - DM)	Shore Connection:	440 V/60 Hz
Main Engine Set 4 :	1 x 1825 Kw 1.800 rpm (CUMMINS QSK60 - DM)	Fire-Fighting Monitors	2x1200m ³ /h
Propulsion:	Azimuth Thruster 2 x 2.500 Kw (Total: 6705 BHP)	Fi-Fi System Total Capacity	2400m ³ /h
Power Plant :	Total 7.300 Kw		
Bow Thruster:	2 x 1180 kW ,tunnel		
PERFORMANCE / CONSUMPTION		ACCOMODATION	
Max Speed/Consumption:	13.0 knots at 16-19 t/Day	Cabins:	6 x 1 / 2 x 2 / 4 x 4
Speed/Consumption:	11.0 knots at 12-15 t/Day	Crew/Passengers:	16/10
Standby Mode:	Abt 5,2 t/Day	Messroom:	1
		Lounge:	1
DECK / EQUIPMENT			
Winch:	N/A	Anchor :	2 x 2950 Kg
Windlass:	Schoellhorn Albrechi AW40-2 (40HP)	Total Length of Chain :	2 x 275 m
Capstans:	N/A	Nominal Diameter:	50,8 mm
Deck Socket:	56 units.		
RESCUE EQUIPMENT			
Rescue Boat:	Fast RSQ 470 GRP, 40 HP, 6 pers.	Life jackets:	37
Hospital:	Yes	Life rafts:	4 x 25 / 1 x 16 pers
GMDSS VHF` s:	3 x Jotron		
NAVIGATION AND COMMUNICATION EQUIPMENT			
Radar band X:	1 x Furuno FAR2117	GMDSS Sea Area:	A1, A2, A3
Radar band S:	1 x Furuno FAR2137/12	VDR:	1 x Furuno VR-3000
Gyro:	3 x Scandinavian Micro Systems LR60 AC-H	MF/HF Radio :	Furuno FS2571C
Autopilot:	Navitron NT888G	Magnetic Compass:	Lilly & Gillie MK 2005
ECDIS:	Furuno FEA2107	VHF/DSC:	FURUNO FM8900S FURUNO FM8800
Navtex Receiver:	Furuno NX700P	VHF Radio:	4 x Icom/IC – M 412
BNWAS	Furuno BR-500	GPS	Furuno 2 x GP-150
Joystick:	Converteam Inc.	DP :	RINA ✕DPS-2, converteam Inc.
AIS:	Furuno FA-150	DP Referance:	Fugro GNSS 9205 DGPS, Cyscan



Rua Capitão Salomão, nº 42 – Humaitá, Rio de Janeiro – RJ

Tel: +55 21 2138-2200

www.bravante.com.br